



Mariemont Centennial Commemoration

*An Extraordinary Past
and Inspired Future*

DALE PARK

Preservation and Protection of The Family Statuary

PROJECT PROGRESS

July 2023

FAMILY STATUARY

• History and Purpose of this Project

One of the long-term goals of the **Mariemont Preservation Foundation** has been to protect and preserve this historic family statuary. A model of this statuary depicting central figures of a mother and father doting over a small child, flanked at either end by loving grandmother holding a small baby and a grandfather engaging with a small grandchild, named “L’Enfance” by French Sculptor Lucien Alliot was discovered in Paris in 1920’s by Charles Livingood, Mary Emery’s business advisor, who felt that this statuary, epitomized Mary Emery’s vision for Mariemont as an ideal place to raise a family. An original was intended to be carved for the City of Paris, but it was agreed that a duplicate would be carved from French limestone for Mariemont, with a stipulation inscribed on the statuary that the original belongs to the City of Paris. However, no carving, except this one in Mariemont was ever made.

The base for the statuary was specially prepared locally, experimenting with different aggregates to match the French limestone of the statuary. The three statues were separately crated and shipped to be placed atop the specially fabricated base already situated in Dale Park. These were unveiled and dedicated on November 16, 1929 (the same date as the dedication of the Mariemont Carillon).

Over the years the statuary has deteriorated due to exposure to hazardous environmental conditions resulting in weathering and deterioration of the statues and the base. The Midwest Art Conservation were consulted as to how to preserve and protect this statuary and the consensus was just to clean them and not apply any coatings which could be detrimental to the limestone. The ultimate solution would either be to place them in an indoor setting (which would be unrealistic) or to cover them with a shelter to protect them from further weathering thus preserving them for the enjoyment of future generations.

PRESERVATION

October 2021

- *Scanning:*

Using drones, **TruScan** has digitally scanned the Family Statuary to ensure we have an accurate scaled digital file should anything ever happen to the Statuary.

The file is deposited in the MPF Archives.



PRESERVATION

October 2022

- *Cleaning*

The hand cleaning of the statuary by **Old World Restoration** removed the grime and algae that had accumulated over several years.



PROTECTION

Statues after cleaning

As a result of cleaning, the finer details of the statues are now more pronounced and protection with a shelter will ensure the longevity of these historic statues.



PROTECTION

Design and Construction of a Shelter

- Conservation experts advised that covering the limestone statuary in order to protect it from the rain/freeze/thaw conditions in Cincinnati would preserve its longevity.
- Many designs were considered and ultimately a classic design was chosen because of its openness and unobstructed view of the statuary. The natural stone complements but does not compete with the surrounding adjacent “Georgian” “Colonnial” and “Italian Renaissance” architecture.

PROTECTION

Once the drawings were completed the excavation firm, **Terracon**, was engaged to conduct borings on the site to determine if it was stable and would support the structure.



PROTECTION

Proposed Shelter

Traditional design utilizing limestone, stucco, and red brick

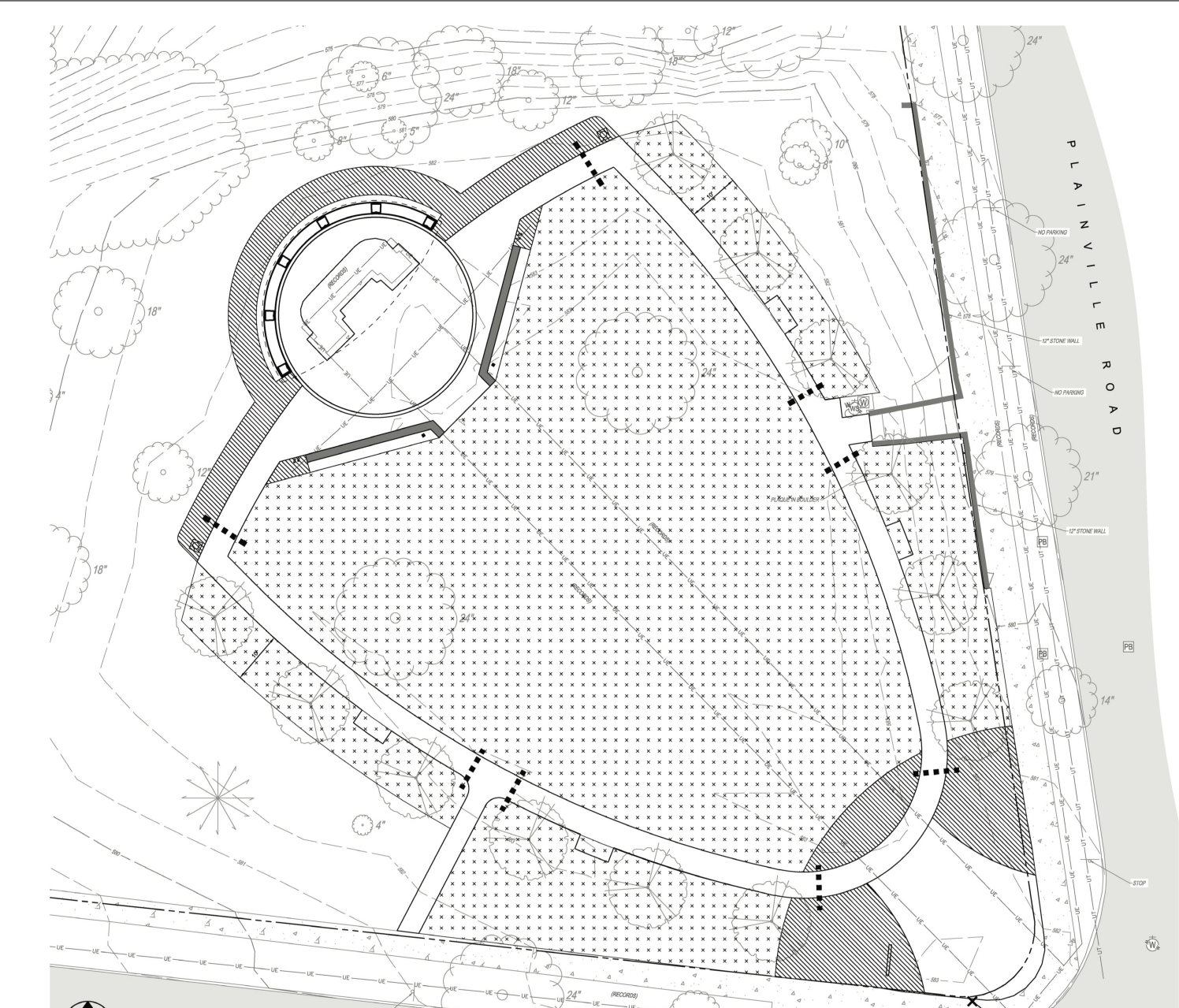


The semi-elliptical shape allows an unimpeded view of the statues from all angles.



Concept Landscaping Plan for the Dale Park Statuary Park and Mary Emery Centennial Garden





Landscaping Design
By Kleiningers Group
(July 2023)